

Day 21 – Which wizard do I use to build traffic?

Testing Challenge:

Different test scenarios might require different kinds of traffic. Types of traffic range from simple L2/L3 traffic to complex MPLS encapsulated traffic which needs to bind very closely with the underlying control plane emulation.

The test challenge is the time required to generate such traffic and the complexity of the underlying tool. Traffic testers need to have the ability to generate simple traffic easily and complex traffic efficiently.

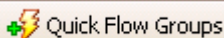
IxNetwork 5.40 Solution:

IxNetwork 5.40 now allows users to build traffic 1 of 3 ways. Often choosing the correct traffic builder is critical to ensure quick time-to-test.

IxNetwork 5.40 now exposes 3 different traffic wizards, namely :

- Quick Flow Groups
- Basic Traffic Wizard
- Advanced Traffic wizard

Quick Flow Groups

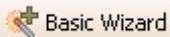


This method should be used to build traffic for the following test scenarios:

- Use for Quick L2/L3 Traffic with limited traffic tracking
- Use if end user is used to and wants IxExplorer style UDF support
- **DO NOT use** if underlying traffic needs to be bound to the control plane emulation (E.g. do NOT use for tests involving MPLS traffic where traffic needs to include MPLS encapsulation)
- **DO NOT use** if the test traffic involves a complex Src/Dst traffic and endpoint mesh (E.g. do NOT use for Multicast Traffic tests)

Day x – Which wizard do I use to build traffic?

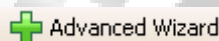
Basic Traffic Wizard



This method should be used to build traffic for the following test scenarios:

- Use for traffic involving Basic Routing tests (E.g. OSPF, BGP, ISIS) with comprehensive ingress tracking options
- Use for tests in which the underlying traffic needs to be bound to the control plane emulation
- DO NOT use for tests which require 'Flow Grouping' (e.g. DO NOT use for test cases where a user might need to control traffic)
- DO NOT use for tests which require QoS configuration
- DO NOT use for tests which need 'egress tracking'

Advanced Traffic Wizard



This method should be used to build traffic for the following test scenarios:

- Use for Complex Multicast, Routing and MPLS tests
- Use for tests involving mixed encapsulations
- Use for tests which involve QoS configuration
- Use for tests which involve 'Flow Grouping'
- Use for tests involving Multi-field Ingress tracking
- Use for tests involving Single-field Egress tracking
- Use for tests building RAW traffic with the packet editor

Conclusion:

With the ability to select different wizards to configure traffic, IxNetwork 5.40 allows users to easily create simple traffic to validate basic device functionality with just a few clicks (Quick Flow Groups). It also gives users powerful capabilities with the basic and advanced traffic wizards and enables them to build complex traffic with an easy to use interface (GUI).